

THREADED ACCESSORIES



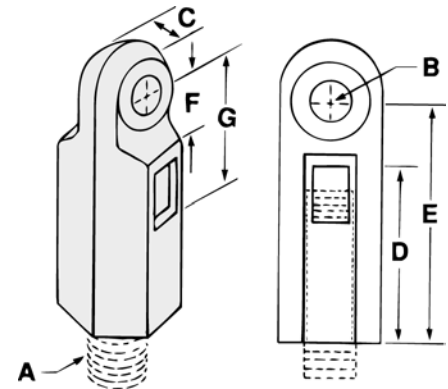
FUNCTION: Designed for attaching hanger rod to various types of attachments. Allows a 1" vertical adjustment of the rod. Frequently used in conjunction with Fig. 630 malleable iron beam clamp.

ORDERING: Specify rod size and figure number.

Rod Size A	For Pipe Sizes	B	C	D
3/8	1/2 to 2	1/2	1/2	1 1/4
1/2	2 1/2 to 3 1/2	1/2	5/8	1 3/8
5/8	4 & 5	1/2	5/8	1 1/2
3/4	6 & 8	1/2	5/8	1 3/4
7/8	10 & 12	9/16	3/4	1 7/8

Rod Size A	E	F	G	Max. Rec. Load/lbs.	Wt. Each (in lbs.)
3/8	2 1/16	9/16	1 1/4	730	.20
1/2	2 5/16	1 1/16	1 3/8	1350	.43
5/8	2 7/16	3/4	1 7/16	1550	.46
3/4	2 7/8	7/8	1 11/16	2100	.63
7/8	3	7/8	1 3/4	2350	.67

**Fig. 25
EXTENSION PIECE**



MATERIAL: Malleable iron
FINISH: Plain