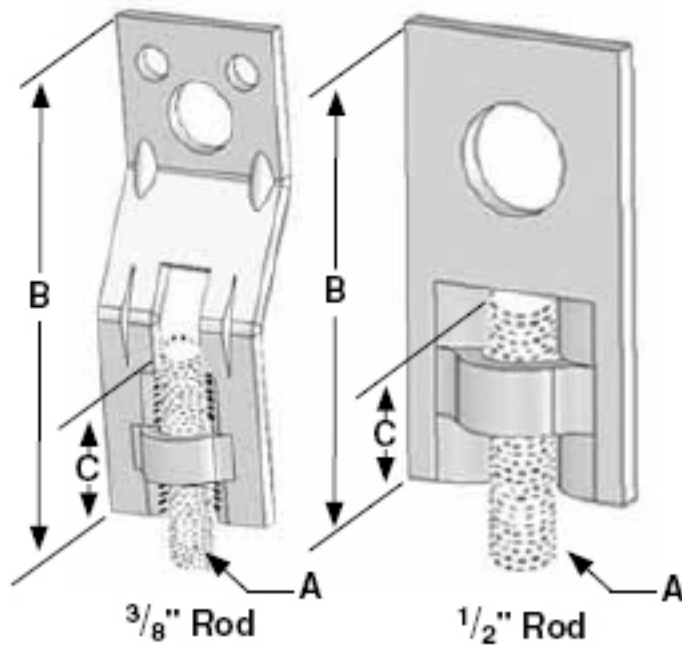


THREADED ACCESSORIES



Fig. 37
STEEL EYE SOCKET



FUNCTION: Designed for attaching hanger rod to wood structures. Secured with Fig. 45 lag screw or two Fig. 48 wood drive screws, see chart.

APPROVALS: Underwriters' Laboratories Listed in the U.S. (UL) and Canada (CUL) for $\frac{3}{8}$ " and $\frac{1}{2}$ " rod sizes. Factory Mutual Approved for $\frac{3}{8}$ " rod size only.

ORDERING: Specify rod size and figure number.

Rod Size A	Max. Pipe Size	Screw Size	B	C	Max. Rec. Load/lbs.	Wt. Each (in lbs.)
$\frac{3}{8}$	2	(2) #16 x 2	$3\frac{1}{4}$	$1\frac{1}{4}$	400	.09
$\frac{3}{8}$	4	$\frac{1}{2}$ x $2\frac{1}{2}$	$3\frac{1}{4}$	$1\frac{1}{4}$	730	.09
$\frac{1}{2}$	6	$\frac{1}{2}$ x 3	$2\frac{3}{4}$	$1\frac{3}{16}$	1350	.11

Note: The $\frac{3}{8}$ " offset design provides full vertical rod adjustment.



MATERIAL: Low carbon steel
FINISH: Electro-galvanized