

THREADED ACCESSORIES



FUNCTION: Designed for use as a convenient method of connecting hanger rods to pipe lugs, angles, etc. As a structural attachment it is most commonly used in conjunction with Fig. 935 welding lug.

APPROVALS: Complies with Federal Specifications A-A-1192A (Type 14) and Manufacturers' Standardization Society ANSI/SP-69 and SP-58 (Type 14).

ORDERING: Specify size number, rod size, with or without pin and figure number. If other than standard combination is required, specify size number, rod size, pin size and grip.

Size No.	Rod Size A	Pin Size	Grip	B	C	D
2	3/8	1/2	1/2	3 5/8	1 1/2	5/8
2	1/2	5/8	1/2	3 5/8	1 1/2	5/8
2	5/8	3/4	5/8	3 5/8	1 1/2	5/8
2 1/2	3/4	7/8	3/4	5	2	7/8
2 1/2	7/8	1	7/8	5	2	7/8
3	1	1 1/8	1	5	3	1 5/16
3	1 1/4	1 3/8	1 1/4	5	3	1 5/16
3 1/2	1 1/2	1 5/8	1 1/2	6	3 1/2	1 5/8
4	1 3/4	1 7/8	1 1/2	6	4	1 3/4
5	2	2 1/4	2 1/2	7	5	2 1/4
6	2 1/4	2 1/2	2 1/2	8	6	2 3/4
6	2 1/2	2 3/4	2 1/2	8	6	2 3/4
7	2 3/4	3	2 1/2	8	7	3
7	3	3 1/4	2 1/2	9	7	3

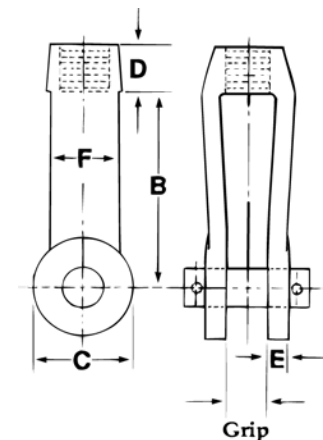
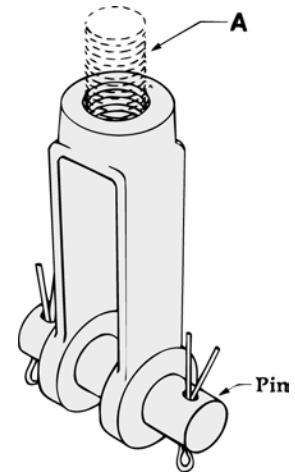
Size No.	Rod Size A	E	F	Max. Rec. Load/lbs.		Wt. Each (in lbs.)	
				650°F	750°F	w/o pin	with pin
2	3/8	5/16	1 1/16	730	540	.9	1.0
2	1/2	5/16	1 1/16	1350	1010	.7	.9
2	5/8	5/16	1 1/16	1810	1610	.7	.9
2 1/2	3/4	3/8	1 1/4	2710	2420	2.5	3.0
2 1/2	7/8	3/8	1 1/4	3770	3360	2.5	3.4
3	1	1/2	1 1/2	4960	4420	4.0	5.1
3	1 1/4	1/2	1 1/2	8000	7140	3.8	5.5
3 1/2	1 1/2	1/2	1 3/4	11630	10370	6.0	8.5
4	1 3/4	1/2	2	15700	14000	8.0	12.9
5	2	5/8	2 1/2	20700	18460	16.0	23.3
6	2 1/4	3/4	3	27200	24260	26.0	35.1
6	2 1/2	3/4	3	33500	29880	25.5	36.0
7	2 3/4	7/8	3 1/2	41580	37066	36.0	50.0
7	3	7/8	3 1/2	50580	45085	35.0	51.5

Note: Supports loads equal to the full limitation of the hanger rod.

Fig. 38
FORGED STEEL CLEVIS

Fig. 38 RIGHT-HAND THREADS

Fig. 38L LEFT-HAND THREADS



Regularly furnished with pin, unless specified otherwise.

MATERIAL: Forged steel

FINISH: Plain