

CENTER LOAD BEAM CLAMPS



STEEL CENTER LOAD BEAM CLAMP

FIG. 625

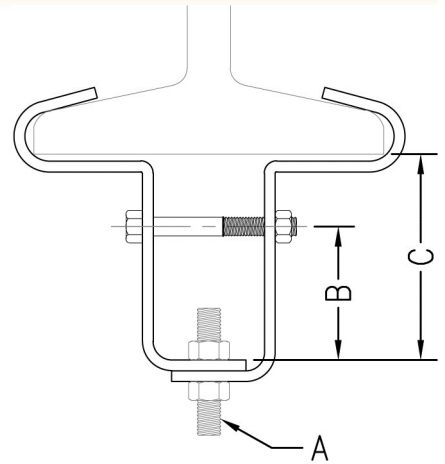
Function: Designed to be used in the suspension of a hanger rod from the center of an I-beam. The clamp provides a vertical adjustment of approximately 2" (50.8).

Material: Carbon steel (Type 304 or 316 Stainless Steel upon request)

Finish: Plain or electro-galvanized (Hot dipped galvanized with electro-galvanized hardware upon request)

Ordering: Specify figure number, rod size, flange width, material, and finish.

NOTE: Box style furnished on some sizes.



Rod Size A	B		C		Max. Rec. Load		Wt. Each													
							Flange Width													
							4 (101.6)		5 (127.0)		6 (152.4)		7 (177.4)		8 (203.2)		10 (254.2)		12 (304.8)	
							lbs.	kN	lbs.	kg	lbs.	kg	lbs.	kg	lbs.	kg	lbs.	kg	lbs.	kg
3/8	3	(76.20)	4	(101.60)	550	(2.45)	1.68	(.76)	1.81	(.82)	1.93	(.88)	2.05	(.93)	2.14	(.97)	2.35	(1.07)	2.59	(1.17)
1/2	3	(76.20)	4	(101.60)	850	(3.78)	2.01	(.91)	2.17	(.98)	2.31	(1.05)	2.46	(1.12)	2.56	(1.16)	2.82	(1.28)	3.11	(1.41)
5/8	3 1/4	(82.55)	4 1/2	(114.30)	1100	(4.89)	3.28	(1.49)	3.52	(1.60)	3.73	(1.69)	3.95	(1.79)	4.11	(1.86)	4.49	(2.04)	4.93	(2.24)
3/4	3 1/4	(82.55)	4 1/2	(114.30)	1500	(6.67)	4.34	(1.97)	4.66	(2.11)	4.95	(2.25)	5.25	(2.38)	5.46	(2.48)	5.96	(2.70)	6.55	(2.97)
7/8	3 1/2	(88.90)	5	(127.00)	2600	(11.57)	6.57	(2.98)	6.67	(3.03)	7.05	(3.20)	7.44	(3.37)	7.73	(3.51)	8.40	(3.81)	9.18	(4.16)
1	3 1/2	(88.90)	5	(127.00)	4300	(19.13)	7.97	(3.62)	8.24	(3.74)	8.77	(3.98)	9.26	(4.20)	9.62	(4.36)	10.46	(4.74)	11.43	(5.18)
1 1/8	3 1/2	(88.90)	5 1/2	(139.70)	6100	(27.13)	14.46	(6.56)	13.69	(6.21)	13.74	(6.23)	15.07	(6.84)	15.60	(7.08)	16.86	(7.65)	18.32	(8.31)
1 1/4	3 1/2	(88.90)	5 1/2	(139.70)	8000	(35.59)	18.76	(8.51)	18.17	(8.24)	18.45	(8.37)	19.82	(8.99)	20.36	(9.24)	22.21	(10.07)	24.18	(10.97)

- THREADED ACCESSORIES
- CPVC STRAPS
- BAND HANGERS
- BEAM CLAMPS
- CLEVIS HANGERS
- PIPE ROLLER SUPPORTS
- SPLIT RING HANGERS
- PIPE CLAMPS
- CENTER LOAD BEAM CLAMPS
- PIPE SHIELDS, INSULATION, & SADDLES
- PIPE GUIDES & SLIDES
- WALL BRACKETS
- PIPE SUPPORTS
- STRUCTURAL ATTACHMENTS
- SEISMIC BRACING