



www.phd-mfg.com

BAND HANGERS

FIG. 180, 180F, & 181

BAND HANGER

Function: Designed for the suspension of non-insulated stationary pipe lines. Fig. 180F has a layer of felt which separates the pipe from the hanger to reduce vibration and sound.

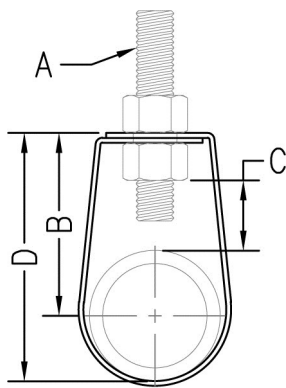
Material: Carbon steel (Type 304 or 316 Stainless Steel upon request)

Finish: Plain (**Fig. 180**), plain with felt (**Fig. 180F**), or electro-galvanized (**Fig. 181**)

Approvals: Complies with Federal Specifications A-A-1192A (Type 7) and Manufacturers' Standardization Society ANSI/MSS SP-58 (Type 7), which supersedes ANSI/MSS SP-69.

Ordering: Specify figure number and pipe size.

NOTE: Use of an upper locknut ensures proper performance. If ordering felt lined hangers for 3 1/2" (90) pipe or less, order the next larger size to allow for the thickness of the felt lining.



Pipe Size	Rod Size	B		Adj. C		D		Max. Rec. Load		Wt. Each		
		in.	mm.	in.	mm.	in.	mm.	lbs.	kN	lbs.	kg	
1/2	(15)	3/8	2 1/4	(57.15)	1 3/8	(34.93)	2 11/16	(68.26)	610	(2.71)	.13	(.06)
3/4	(20)	3/8	2 1/8	(53.98)	1 1/8	(28.58)	2 11/16	(68.26)	610	(2.71)	.13	(.06)
1	(25)	3/8	2 1/8	(53.98)	1 1/16	(26.99)	2 13/16	(71.44)	610	(2.71)	.14	(.06)
1 1/4	(32)	3/8	2 5/16	(58.74)	1	(25.40)	3 3/16	(80.96)	610	(2.71)	.16	(.07)
1 1/2	(40)	3/8	2 7/16	(61.91)	1 1/16	(26.99)	3 7/16	(87.31)	610	(2.71)	.18	(.08)
2	(50)	3/8	2 7/8	(73.03)	1 3/16	(30.16)	4 1/16	(103.19)	610	(2.71)	.20	(.09)
2 1/2	(65)	1/2	3 1/8	(79.38)	7/8	(22.23)	4 7/16	(112.71)	970	(4.31)	.37	(.17)
3	(80)	1/2	3 3/4	(95.25)	1 3/8	(34.93)	5 1/2	(139.70)	970	(4.31)	.43	(.20)
3 1/2	(90)	1/2	3 7/8	(98.43)	1 1/4	(31.75)	5 7/8	(149.23)	970	(4.31)	.47	(.21)
4	(100)	1/2	4 1/4	(107.95)	1 3/8	(34.93)	6 1/2	(165.10)	1250	(5.56)	.69	(.31)
5	(125)	1/2	4 13/16	(122.24)	1 1/2	(38.10)	7 9/8	(193.68)	1250	(5.56)	.82	(.37)
6	(150)	3/4	5 5/16	(150.81)	1 11/16	(42.86)	9 1/4	(234.95)	1600	(7.12)	1.50	(.68)
8	(200)	3/4	7 15/16	(201.61)	2 1/2	(63.50)	12 1/4	(311.15)	1800	(8.01)	1.89	(.86)