

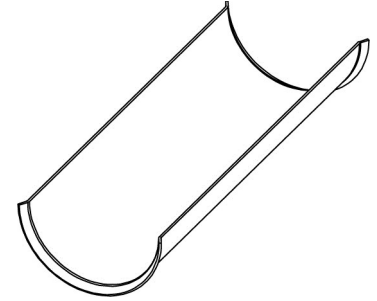
INSULATION SHIELDS



INSULATION PROTECTION SHIELD

FIG. 170

- Function:** Designed for use in the suspension of insulated pipe lines to protect the insulation from being crushed by the hanger.
- Material:** Carbon steel (Type 304 or 316 Stainless Steel upon request)
- Finish:** Pre-galvanized
- Approvals:** Complies with Federal Specifications A-A-1192A (Type 40) and Manufacturers' Standardization Society ANSI/MSS SP-58 (Type 40) which supersedes ANSI/MSS SP-69.
- Ordering:** Specify figure number, shield number, and material.



NOTE: 12" (304.8mm) length shields furnished with flared ends. To determine proper size consult shield selection guide.

Size No.	Shield I.D.		Shield Length		Shield Gauge	Hanger Size		Wt. Each	
		(mm)		(mm)				lbs.	kg
1A	2 ³ / ₈	(60.33)	12	(304.8)	18	2	(50)	.55	(.25)
2A	2 ⁵ / ₈	(66.68)	12	(304.8)	18	2 ¹ / ₂	(65)	.64	(.29)
3A	2 ⁷ / ₈	(73.03)	12	(304.8)	18	2 ¹ / ₂	(65)	.66	(.30)
4A	3 ¹ / ₂	(88.90)	12	(304.8)	18	3	(80)	.89	(.40)
5A	4	(101.60)	12	(304.8)	18	3 ¹ / ₂	(90)	.91	(.41)
6A	4 ¹ / ₂	(114.30)	12	(304.8)	18	4	(100)	1.12	(.51)
7A	5	(127.00)	12	(304.8)	18	5	(125)	1.15	(.52)
8A	5 ⁵ / ₈	(142.88)	12	(304.8)	18	5	(125)	1.35	(.61)
8B	5 ⁵ / ₈	(142.88)	12	(304.8)	16	5	(125)	2.00	(.91)
9A	6	(152.40)	12	(304.8)	18	6	(150)	1.45	(.66)
9B	6	(152.40)	12	(304.8)	16	6	(150)	2.10	(.95)
10A	6 ⁵ / ₈	(168.28)	12	(304.8)	18	6	(150)	1.50	(.68)
10B	6 ⁵ / ₈	(168.28)	12	(304.8)	16	6	(150)	2.37	(1.08)
11A	7 ⁵ / ₈	(193.68)	12	(304.8)	18	8	(200)	2.02	(.92)
11B	7 ⁵ / ₈	(193.68)	12	(304.8)	16	8	(200)	2.50	(1.13)
11C	7 ⁵ / ₈	(193.68)	18	(457.2)	16	8	(200)	3.75	(1.70)
12A	8 ⁵ / ₈	(219.08)	12	(304.8)	18	8	(200)	2.28	(1.03)
12B	8 ⁵ / ₈	(219.08)	12	(304.8)	16	8	(200)	2.83	(1.28)
12C	8 ⁵ / ₈	(219.08)	18	(457.2)	16	8	(200)	4.25	(1.93)
13A	9 ⁵ / ₈	(244.48)	12	(304.8)	18	10	(250)	2.54	(1.15)
13B	9 ⁵ / ₈	(244.48)	12	(304.8)	16	10	(250)	3.15	(1.43)
13C	9 ⁵ / ₈	(244.48)	18	(457.2)	16	10	(250)	4.73	(2.15)
14A	10 ³ / ₄	(273.05)	12	(304.8)	18	10	(250)	2.84	(1.29)
14B	10 ³ / ₄	(273.05)	12	(304.8)	16	10	(250)	3.53	(1.60)
14C	10 ³ / ₄	(273.05)	18	(457.2)	16	10	(250)	5.30	(2.40)
14D	10 ³ / ₄	(273.05)	24	(609.6)	14	10	(250)	9.63	(4.37)
15B	11 ³ / ₄	(298.45)	12	(304.8)	16	12	(300)	4.00	(1.81)
15C	11 ³ / ₄	(298.45)	18	(457.2)	16	12	(300)	6.00	(2.72)
15D	11 ³ / ₄	(298.45)	24	(609.6)	14	12	(300)	10.00	(4.54)
16B	12 ³ / ₄	(323.85)	12	(304.8)	16	12	(300)	4.18	(1.90)

Size No.	Shield I.D.		Shield Length		Shield Gauge	Hanger Size		Wt. Each	
		(mm)		(mm)				lbs.	kg
16C	12 ³ / ₄	(323.85)	18	(457.2)	16	12	(300)	6.28	(2.85)
16D	12 ³ / ₄	(323.85)	24	(609.6)	14	12	(300)	10.90	(4.94)
17B	14	(355.60)	12	(304.8)	16	14	(350)	4.58	(2.08)
17D	14	(355.60)	24	(609.6)	14	14	(350)	12.25	(5.56)
18B	15	(381.00)	12	(304.8)	16	16	(400)	4.90	(2.22)
18D	15	(381.00)	24	(609.6)	14	16	(400)	13.00	(5.90)
19B	16	(406.40)	12	(304.8)	16	16	(400)	5.20	(2.36)
19D	16	(406.40)	24	(609.6)	14	16	(400)	13.81	(6.26)
20B	17	(431.80)	12	(304.8)	16	18	(450)	5.53	(2.51)
20D	17	(431.80)	24	(609.6)	14	18	(450)	14.56	(6.60)
21B	18	(457.20)	12	(304.8)	16	18	(450)	6.20	(2.81)
21D	18	(457.20)	24	(609.6)	14	18	(450)	15.46	(7.01)
21E	18	(457.20)	24	(609.6)	12	18	(450)	21.25	(9.64)
22B	19	(482.60)	12	(304.8)	16	20	(500)	6.50	(2.95)
22D	19	(482.60)	24	(609.6)	14	20	(500)	16.32	(7.40)
22E	19	(482.60)	24	(609.6)	12	20	(500)	22.41	(10.17)
23B	20	(508.00)	12	(304.8)	16	20	(500)	7.25	(3.29)
23D	20	(508.00)	24	(609.6)	14	20	(500)	17.18	(7.79)
23E	20	(508.00)	24	(609.6)	12	20	(500)	24.75	(11.23)
24B	21	(533.40)	12	(304.8)	16	24	(600)	7.30	(3.31)
24E	21	(533.40)	24	(609.6)	12	24	(600)	24.75	(11.23)
25B	22	(558.80)	12	(304.8)	16	24	(600)	7.60	(3.45)
25E	22	(558.80)	24	(609.6)	12	24	(600)	25.92	(11.76)
26B	23	(584.20)	12	(304.8)	16	24	(600)	7.75	(3.52)
26E	23	(584.20)	24	(609.6)	12	24	(600)	26.50	(12.02)
27B	24	(609.60)	12	(304.8)	16	24	(600)	8.00	(3.63)
27E	24	(609.60)	24	(609.6)	12	24	(600)	27.20	(12.34)
28E	26	(660.40)	24	(609.6)	12	30	(750)	28.00	(12.70)
29E	27	(685.80)	24	(609.6)	12	30	(750)	30.20	(13.70)
30E	28	(711.20)	24	(609.6)	12	30	(750)	32.50	(14.74)

THREADED ACCESSORIES
CPVC STRAPS
BAND HANGERS
BEAM CLAMPS
CLEVIS HANGERS
PIPE ROLLER SUPPORTS
SPLIT RING HANGERS
PIPE CLAMPS
CENTER LOAD BEAM CLAMPS
PIPE SHIELDS, INSULATION, & SADDLES
PIPE GUIDES & SLIDES
WALL BRACKETS
PIPE SUPPORTS
STRUCTURAL ATTACHMENTS
SEISMIC BRACING