

CLEVIS HANGERS



PLASTIC PIPE CLEVIS HANGER

FIG. 450V

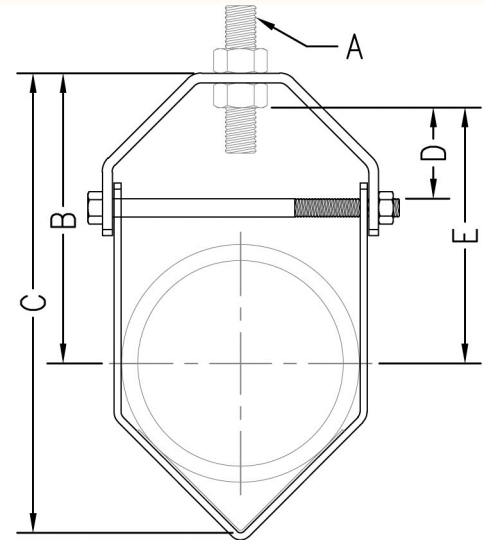
Function: Designed for the suspension of flexible plastic pipe lines. Used in conjunction with Fig. 450T.

Material: Carbon steel (Type 304 or 316 Stainless Steel upon request)

Finish: Plain or electro-galvanized (Hot dipped galvanized with electro-galvanized hardware upon request)

Ordering: Specify figure number, size number, material, and finish.

NOTE: Use of an upper locknut ensures proper performance.



Size No.	Pipe Size		Rod Size A	B		C		Adjustment D		E		Cross Bolt	Max. Rec. Load		Wt. Each	
	in.	mm.		in.	mm.	in.	mm.	in.	mm.	in.	mm.		lbs.	kN	lbs.	kg
1	1/2	(15)	3/8	4 3/4	(120.65)	5 1/2	(139.70)	1 5/8	(41.28)	4 5/16	(109.54)	1/4	150	(.67)	.38	(.17)
1	3/4	(20)	3/8	4 9/16	(115.89)	5 1/2	(139.70)	1 5/8	(41.28)	4 1/8	(104.78)	1/4	150	(.67)	.38	(.17)
1	1	(25)	3/8	6 3/8	(161.93)	5 1/2	(139.70)	1 5/8	(41.28)	3 15/16	(100.01)	1/4	150	(.67)	.38	(.17)
1	1 1/4	(32)	3/8	4 1/8	(104.78)	5 1/2	(139.70)	1 5/8	(41.28)	3 11/16	(93.66)	1/4	150	(.67)	.38	(.17)
1	1 1/2	(40)	3/8	4	(101.60)	5 1/2	(139.70)	1 5/8	(41.28)	3 9/16	(90.49)	1/4	150	(.67)	.38	(.17)
1	2	(50)	3/8	3 11/16	(93.66)	5 1/2	(139.70)	1 5/8	(41.28)	3 1/4	(82.55)	1/4	150	(.67)	.38	(.17)
2	2 1/2	(65)	5/8	6 5/8	(168.28)	8 3/4	(222.25)	1 3/4	(44.45)	5 13/16	(147.64)	3/8	150	(.67)	1.15	(.52)
2	3	(80)	5/8	6 3/16	(157.16)	8 3/4	(222.25)	1 3/4	(44.45)	5 3/8	(136.53)	3/8	150	(.67)	1.15	(.52)
2	3 1/2	(90)	5/8	5 13/16	(147.64)	8 3/4	(222.25)	1 3/4	(44.45)	5	(127.00)	3/8	150	(.67)	1.15	(.52)
2	4	(100)	5/8	5 7/16	(138.11)	8 3/4	(222.25)	1 3/4	(44.45)	4 5/8	(117.48)	3/8	150	(.67)	1.15	(.52)

Adjustment "D" (Top of cross bolt to bottom of hanger rod nut.)

THREADED ACCESSORIES
CPVC STRAPS
BAND HANGERS
BEAM CLAMPS
CLEVIS HANGERS
PIPE ROLLER SUPPORTS
SPLIT RING HANGERS
PIPE CLAMPS
CENTER LOAD BEAM CLAMPS
PIPE SHIELDS, INSULATION, & SADDLES
PIPE GUIDES & SLIDES
WALL BRACKETS
PIPE SUPPORTS
STRUCTURAL ATTACHMENTS
SEISMIC BRACING