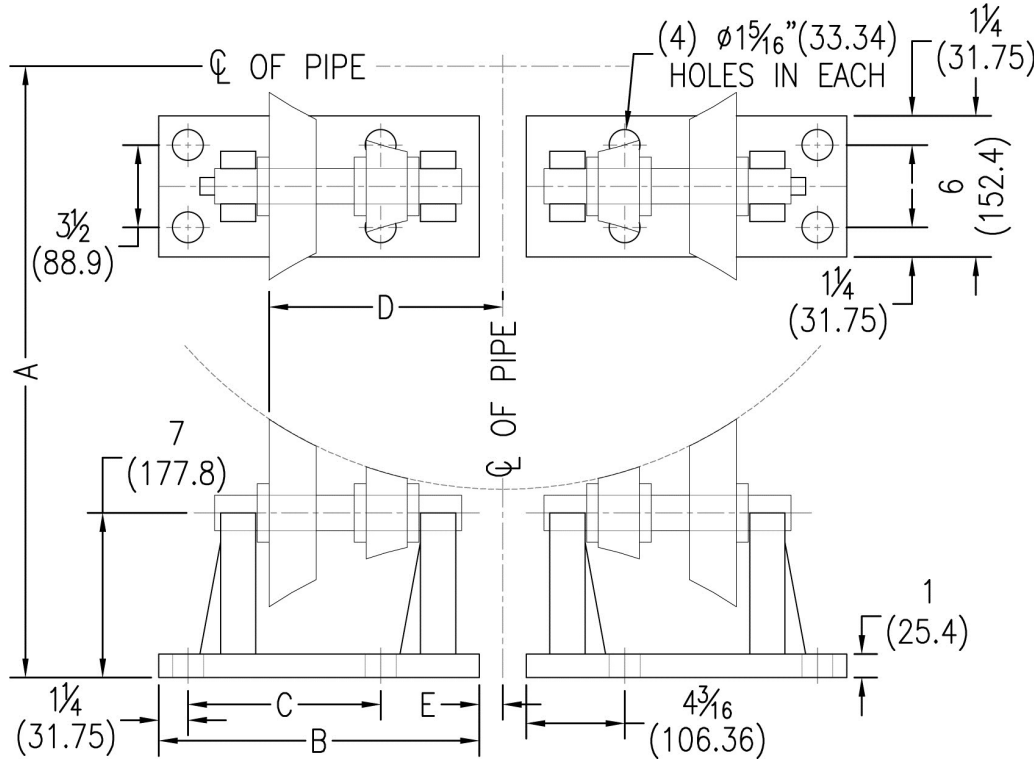


# PIPE ROLLER SUPPORTS

## FIG. 488 FABRICATED ROLLER FOR LARGE PIPING

- Function:** Designed to support pipe in applications where horizontal movement, due to expansion and contraction, will occur.
- Sizing:** Pipe roller size shown for bare pipe.
- Material:** Carbon steel
- Finish:** Plain or electro-galvanized
- Ordering:** Specify figure number and finish.



Pipe Size	A	B	C	D	E	Max. Rec. Load		Wt. Each	
						lbs.	kN	lbs.	kg
30 (750)	23 <sup>1</sup> / <sub>4</sub> (590.55)	13 <sup>5</sup> / <sub>8</sub> (346.08)	8 <sup>3</sup> / <sub>16</sub> (207.96)	8 <sup>13</sup> / <sub>16</sub> (223.84)	0 (0)	60000	(266.89)	142	(64.41)
36 (900)	26 (660.40)	13 <sup>5</sup> / <sub>8</sub> (346.08)	8 <sup>3</sup> / <sub>16</sub> (207.96)	9 <sup>15</sup> / <sub>16</sub> (252.41)	1 (25.40)	60000	(266.89)	142	(64.41)
42 (1050)	28 <sup>15</sup> / <sub>16</sub> (735.01)	13 <sup>5</sup> / <sub>8</sub> (346.08)	8 <sup>3</sup> / <sub>16</sub> (207.96)	10 <sup>15</sup> / <sub>16</sub> (277.81)	2 (50.80)	60000	(266.89)	142	(64.41)
46 (1150)	30 <sup>7</sup> / <sub>8</sub> (784.23)	13 <sup>5</sup> / <sub>8</sub> (346.08)	8 <sup>3</sup> / <sub>16</sub> (207.96)	11 <sup>7</sup> / <sub>16</sub> (290.51)	2 <sup>7</sup> / <sub>16</sub> (61.91)	60000	(266.89)	142	(64.41)
46 (1150)	31 <sup>1</sup> / <sub>8</sub> (790.58)	16 <sup>1</sup> / <sub>4</sub> (412.75)	10 <sup>13</sup> / <sub>16</sub> (274.64)	12 <sup>7</sup> / <sub>8</sub> (327.03)	1 <sup>1</sup> / <sub>4</sub> (31.75)	60000	(266.89)	186	(84.37)
48 (1200)	32 (812.80)	16 <sup>1</sup> / <sub>4</sub> (412.75)	10 <sup>13</sup> / <sub>16</sub> (274.64)	13 <sup>1</sup> / <sub>4</sub> (336.55)	1 <sup>11</sup> / <sub>16</sub> (42.86)	60000	(266.89)	186	(84.37)
54 (1350)	34 <sup>7</sup> / <sub>8</sub> (885.83)	16 <sup>1</sup> / <sub>4</sub> (412.75)	10 <sup>13</sup> / <sub>16</sub> (274.64)	14 <sup>5</sup> / <sub>16</sub> (363.54)	2 <sup>3</sup> / <sub>4</sub> (69.85)	60000	(266.89)	186	(84.37)
60 (1500)	37 <sup>3</sup> / <sub>4</sub> (958.85)	16 <sup>1</sup> / <sub>4</sub> (412.75)	10 <sup>13</sup> / <sub>16</sub> (274.64)	15 <sup>7</sup> / <sub>8</sub> (403.23)	3 <sup>15</sup> / <sub>16</sub> (100.01)	60000	(266.89)	186	(84.37)
66 (1650)	40 <sup>9</sup> / <sub>16</sub> (1030.29)	16 <sup>1</sup> / <sub>4</sub> (412.75)	10 <sup>13</sup> / <sub>16</sub> (274.64)	16 <sup>1</sup> / <sub>2</sub> (419.10)	5 (127.00)	60000	(266.89)	186	(84.37)
72 (1800)	43 <sup>3</sup> / <sub>8</sub> (1101.73)	16 <sup>1</sup> / <sub>4</sub> (412.75)	10 <sup>13</sup> / <sub>16</sub> (274.64)	17 <sup>5</sup> / <sub>8</sub> (447.68)	6 <sup>1</sup> / <sub>16</sub> (153.99)	60000	(266.89)	186	(84.37)