

CLEVIS HANGERS

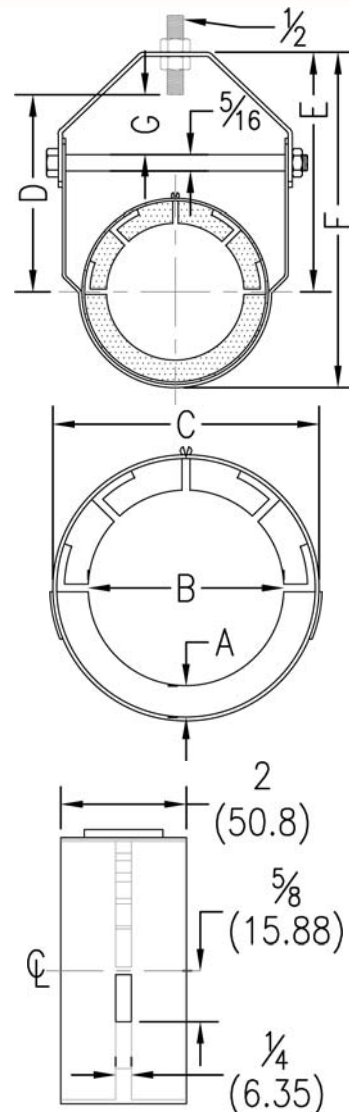


CLEVIS SERIES KLO-SHURE HANGER

FIG. 703025 - 708362

Figure Number	Inner Diameter B		Coupling Outer Diameter C		3/8" (9.52) Insulation Thickness A							Max. Rec. Load		Wt. Each		
					D		E		F		G		lbs.	kN	Lbs.	kg
703025*	1/4	(6.35)	1 1/8	(28.58)	-	-	-	-	-	-	-	-	-	-	0.03	(0.01)
703037*	3/8	(9.53)	1 1/4	(31.75)	-	-	-	-	-	-	-	-	-	-	0.03	(0.01)
703050*	1/2	(12.70)	1 3/8	(34.93)	-	-	-	-	-	-	-	-	-	-	0.04	(0.02)
703062*	5/8	(15.88)	1 1/2	(38.10)	-	-	-	-	-	-	-	-	-	-	0.04	(0.02)
703075*	3/4	(19.05)	1 5/8	(41.28)	-	-	-	-	-	-	-	-	-	-	0.04	(0.02)
703087	7/8	(22.23)	1 3/4	(44.45)	2 1/2	(63.50)	3 3/8	(85.73)	4 3/8	(111.13)	7 1/16	(11.11)	250	(1.11)	0.50	(0.23)
703100*	1	(25.40)	1 7/8	(47.63)	-	-	-	-	-	-	-	-	-	-	0.05	(0.02)
703112*	1 1/8	(28.58)	2	(50.80)	2 7/8	(73.03)	3 1/2	(88.90)	4 5/8	(117.48)	5 5/8	(15.88)	250	(1.11)	0.52	(0.24)
703137	1 3/8	(34.93)	2 1/4	(57.15)	3 3/16	(80.96)	3 3/16	(96.84)	5	(127.00)	1 5/16	(23.81)	250	(1.11)	0.54	(0.25)
703162	1 5/8	(41.28)	2 1/2	(63.50)	3 1/2	(88.90)	4	(101.60)	5 1/2	(139.70)	1 1/16	(26.99)	250	(1.11)	0.56	(0.25)
703212	2 1/8	(53.98)	3	(76.20)	4 3/16	(106.36)	4 3/4	(120.65)	6 1/2	(165.10)	1 5/16	(33.34)	250	(1.11)	0.65	(0.29)
1/2" (12.7) Insulation Thickness A																
704037*	3/8	(9.53)	1 1/2	(38.10)	-	-	-	-	-	-	-	-	-	-	0.04	(0.02)
704050*	1/2	(12.70)	1 5/8	(41.28)	-	-	-	-	-	-	-	-	-	-	0.05	(0.02)
704062	5/8	(15.88)	1 3/4	(44.45)	2 1/2	(63.50)	3 3/8	(85.73)	4 3/8	(111.13)	7 1/16	(11.11)	250	(1.11)	0.50	(0.23)
704075	3/4	(19.05)	1 7/8	(47.63)	2 5/8	(66.68)	3 7/16	(87.31)	4 1/2	(114.30)	1 1/2	(12.70)	250	(1.11)	0.50	(0.23)
704087	7/8	(22.23)	2	(50.80)	2 7/8	(73.03)	3 1/2	(88.90)	4 5/8	(117.48)	5 5/8	(15.88)	250	(1.11)	0.52	(0.24)
704100	1	(25.40)	2 1/8	(53.98)	3	(76.20)	3 5/8	(92.08)	4 7/8	(123.83)	7 7/8	(22.23)	250	(1.11)	0.54	(0.24)
704112	1 1/8	(28.58)	2 1/4	(57.15)	3 3/16	(80.96)	3 13/16	(96.84)	5	(127.00)	1 5/16	(23.81)	250	(1.11)	0.55	(0.25)
704137	1 3/8	(34.93)	2 1/2	(63.50)	3 1/2	(88.90)	4	(101.60)	5 1/2	(139.70)	1 1/16	(26.99)	250	(1.11)	0.57	(0.26)
704162	1 5/8	(41.28)	2 3/4	(69.85)	3 3/4	(95.25)	4 3/8	(111.13)	5 7/8	(149.23)	1 1/4	(31.75)	250	(1.11)	0.62	(0.28)
704212	2 1/8	(53.98)	3 1/4	(82.55)	4 1/2	(114.30)	5 1/8	(130.18)	6 7/8	(174.63)	1 7/16	(36.51)	250	(1.11)	0.71	(0.32)
704262	2 5/8	(66.68)	3 3/4	(95.25)	5	(127.00)	5 5/8	(142.88)	7 5/8	(193.68)	1 11/16	(42.86)	350	(1.56)	0.98	(0.44)
704312	3 1/8	(79.38)	4 1/4	(107.95)	5 13/16	(147.64)	6 7/16	(163.51)	8 3/4	(222.25)	2 1/8	(53.98)	350	(1.56)	1.16	(0.53)
704362	3 5/8	(92.08)	4 3/4	(120.65)	6 5/16	(160.34)	6 7/8	(174.63)	9 3/8	(238.13)	2 5/16	(74.61)	350	(1.56)	1.21	(0.55)
704412	4 1/8	(104.78)	5 1/4	(133.35)	6 7/8	(174.63)	7 1/2	(190.50)	10 1/8	(257.18)	2 9/16	(65.09)	350	(1.56)	1.32	(0.60)
3/4" (19.05) Insulation Thickness A																
706025	1/4	(6.35)	1 7/8	(47.63)	2 5/8	(66.68)	3 7/16	(87.31)	4 1/2	(114.30)	1 1/2	(12.70)	250	(1.11)	0.51	(0.23)
706037	3/8	(9.53)	2	(50.80)	2 7/8	(73.03)	3 1/2	(88.90)	4 5/8	(117.48)	5 5/8	(15.88)	250	(1.11)	0.52	(0.24)
706050	1/2	(12.70)	2 1/8	(53.98)	3	(76.20)	3 5/8	(92.08)	4 7/8	(123.83)	7 7/8	(22.23)	250	(1.11)	0.54	(0.24)
706062	5/8	(15.88)	2 1/4	(57.15)	3 3/16	(80.96)	3 13/16	(96.84)	5	(127.00)	1 5/16	(23.81)	250	(1.11)	0.56	(0.25)
706075	3/4	(19.05)	2 3/8	(60.33)	3 5/16	(84.14)	3 15/16	(100.01)	5 1/4	(133.35)	1	(25.40)	250	(1.11)	0.58	(0.26)
706087	7/8	(22.23)	2 1/2	(63.50)	3 1/2	(88.90)	4	(101.60)	5 1/2	(139.70)	1 1/16	(26.99)	250	(1.11)	0.59	(0.27)
706112	1 1/8	(28.58)	2 3/4	(69.85)	3 3/4	(95.25)	4 3/8	(111.13)	5 7/8	(149.23)	1 1/4	(31.75)	250	(1.11)	0.64	(0.29)
706137	1 3/8	(34.93)	3	(76.20)	4 3/16	(106.36)	4 3/4	(120.65)	6 1/2	(165.10)	1 5/16	(33.34)	250	(1.11)	0.64	(0.29)
706162	1 5/8	(41.28)	3 1/4	(82.55)	4 1/2	(114.30)	5 1/8	(130.18)	6 7/8	(174.63)	1 7/16	(36.51)	250	(1.11)	0.69	(0.31)
706212	2 1/8	(53.98)	3 3/4	(95.25)	5	(127.00)	5 5/8	(142.88)	7 5/8	(193.68)	1 11/16	(42.86)	350	(1.56)	0.99	(0.45)
706262	2 5/8	(66.68)	4 1/4	(107.95)	5 13/16	(147.64)	6 7/16	(163.51)	8 3/4	(222.25)	2 1/8	(53.98)	350	(1.56)	1.18	(0.54)
706312	3 1/8	(79.38)	4 3/4	(120.65)	6 5/16	(160.34)	6 7/8	(174.63)	9 3/8	(238.13)	2 5/16	(74.61)	350	(1.56)	1.24	(0.56)
706362	3 5/8	(92.08)	5 1/4	(133.35)	6 7/8	(174.63)	7 1/2	(190.50)	10 1/8	(257.18)	2 9/16	(65.09)	350	(1.56)	1.35	(0.61)
706412	4 1/8	(104.78)	5 3/4	(146.05)	7 1/4	(184.15)	7 7/8	(200.03)	10 3/4	(273.05)	2 3/4	(69.85)	350	(1.56)	1.45	(0.66)
1" (25.4) Insulation Thickness A																
708062	5/8	(15.88)	2 3/4	(69.85)	3 3/4	(95.25)	4 3/8	(111.13)	5 7/8	(149.23)	1 1/4	(31.75)	250	(1.11)	0.66	(0.30)
708087	7/8	(22.23)	3	(76.20)	4 3/16	(106.36)	4 3/4	(120.65)	6 1/2	(165.10)	1 5/16	(33.34)	250	(1.11)	0.68	(0.31)
708112	1 1/8	(28.58)	3 1/4	(82.55)	4 1/2	(114.30)	5 1/8	(130.18)	6 7/8	(174.63)	1 7/16	(36.51)	250	(1.11)	0.73	(0.33)
708137	1 3/8	(34.93)	3 1/2	(88.90)	4 3/4	(120.65)	5 3/8	(136.53)	7 1/4	(184.15)	1 9/16	(39.69)	350	(1.56)	1.05	(0.48)
708162	1 5/8	(41.28)	3 3/4	(95.25)	5	(127.00)	5 5/8	(142.88)	7 5/8	(193.68)	1 11/16	(42.86)	350	(1.56)	1.01	(0.46)
708212	2 1/8	(53.98)	4 1/4	(107.95)	5 13/16	(147.64)	6 7/16	(163.51)	8 3/4	(222.25)	2 1/8	(53.98)	350	(1.56)	1.16	(0.53)
708262	2 5/8	(66.68)	4 3/4	(120.65)	6 5/16	(160.34)	6 7/8	(174.63)	9 3/8	(238.13)	2 5/16	(74.61)	350	(1.56)	1.20	(0.55)
708312	3 1/8	(79.38)	5 1/4	(133.35)	6 7/8	(174.63)	7 1/2	(190.50)	10 1/8	(257.18)	2 9/16	(65.09)	350	(1.56)	1.38	(0.62)
708362	3 5/8	(92.08)	5 3/4	(146.05)	7 1/4	(184.15)	7 7/8	(200.03)	10 3/4	(273.05)	2 3/4	(69.85)	350	(1.56)	1.41	(0.64)

*Does not include metal clevis hanger.



Function:
Designed for the suspension of stationary insulated OD tube or nominal pipe lines utilizing elastomeric insulation. Classified 2043 (25/50) for use in plenums and air handling systems.

Hanger Material:
Carbon steel

Cushion Material:
Washington Penn TPO in accordance with ASTM D 4000, TEO0120, A45000

Finish:
Western Gold

Ordering:
Specify figure number.

Unless otherwise specified, all dimensions on drawings and in charts are in inches and dimensions shown in parentheses are in millimeters.

THREADED ACCESSORIES
CPVC STRAPS
BAND HANGERS
BEAM CLAMPS
CLEVIS HANGERS
PIPE ROLLER SUPPORTS
SPLIT RING HANGERS
PIPE CLAMPS
CENTER LOAD BEAM CLAMPS
PIPE SHIELDS, INSULATION, & SADDLES
PIPE GUIDES & SLIDES
WALL BRACKETS
PIPE SUPPORTS
STRUCTURAL ATTACHMENTS
SEISMIC BRACING