

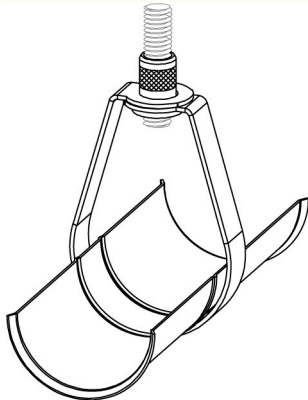
# INSULATION SHIELDS

## FIG. 145, 155, 160, 170, & 455

## SHIELD SELECTION GUIDE

**TO DETERMINE PROPER SHIELD SIZE FOR SIZES NOT LISTED:**

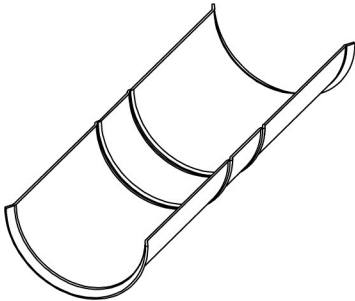
Add 2 times the thickness of the insulation plus the measured O.D. of the pipe. Select shield with I.D. no smaller than the sum total of measured pipe O.D. and twice the insulation.



**Fig. 145 & 155**

### SHIELD NUMBER FOR STEEL PIPE

Pipe Size		Pipe O.D.		Insulation Thickness								
				1/2(12.7)	3/4 (19.0)	1 (25.4)	1 1/2 (38.1)	2 (50.8)	2 1/2 (63.5)	3 (76.2)	3 1/2 (88.9)	4 (101.6)
1/2	(15)	.840	(21.34)	1	1	3	5	7	9	11	--	--
3/4	(20)	1.050	(26.67)	1	2	4	5	7	10	11	--	--
1	(25)	1.315	(33.40)	1	3	4	6	8	10	11	12	13
1 1/4	(32)	1.660	(42.16)	3	4	5	7	8	10	11	12	13
1 1/2	(40)	1.900	(48.26)	3	4	5	7	9	11	12	13	14
2	(50)	2.375	(60.33)	4	5	6	8	10	11	12	13	14
2 1/2	(65)	2.875	(73.03)	5	6	7	9	11	12	13	14	15
3	(80)	3.500	(88.90)	6	7	8	10	11	12	13	14	15
3 1/2	(90)	4.000	(101.60)	7	8	9	11	12	13	14	15	16
4	(100)	4.500	(114.30)	8	9	10	11	12	13	14	15	16
5	(125)	5.563	(141.30)	10	11	11	12	13	14	15	16	17
6	(150)	6.625	(168.28)	11	12	12	13	14	15	16	17	18
8	(200)	8.626	(219.10)	13	14	14	15	16	17	18	19	20
10	(250)	10.750	(273.05)	15	16	16	17	18	19	20	21	22
12	(300)	12.750	(323.85)	17	18	18	19	20	21	22	23	24



**Fig. 160**

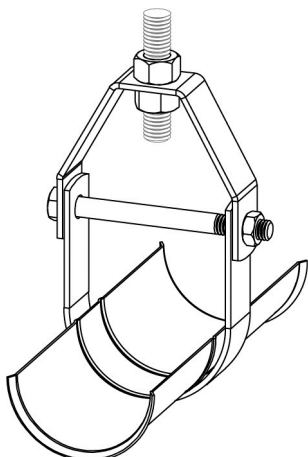
### SHIELD NUMBER FOR COPPER TUBING

Tube Size		Tube O.D.		Insulation Thickness						
				1/2(12.7)	3/4 (19.0)	1 (25.4)	1 1/2 (38.1)	2 (50.8)	2 1/2 (63.5)	3 (76.2)
1/2	(15)	0.625	(15.9)	1	1	2	5	7	8	10
3/4	(20)	0.875	(22.2)	1	1	3	5	7	9	11
1	(25)	1.125	(28.6)	1	2	4	6	8	10	11
1 1/4	(32)	1.375	(34.9)	1	3	4	6	8	10	11
1 1/2	(40)	1.625	(41.3)	2	4	5	7	8	10	11
2	(50)	2.125	(54.0)	4	5	6	8	10	11	12
2 1/2	(65)	2.625	(66.7)	5	6	7	8	10	11	12
3	(80)	3.125	(79.4)	6	7	8	10	11	12	13
3 1/2	(90)	3.625	(92.1)	7	8	8	10	11	12	13
4	(100)	4.125	(104.8)	8	8	10	11	12	13	14
5	(125)	5.125	(130.2)	10	10	11	12	13	14	15
6	(150)	6.125	(155.6)	11	11	12	13	14	15	16

**For Fig. 170**

Specify Shield Type & Shield Number

Shield Type	Length		Gauge
A	12	(304.8)	18
B	12	(304.8)	16
C	18	(457.2)	16
D	24	(609.6)	14
E	24	(609.6)	12



**Fig. 455 & 456**