



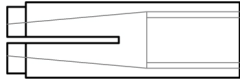
www.phd-mfg.com

# THREADED ACCESSORIES

**FIG. 47**

## CONCRETE ANCHORS

**Fig. 47S**  
STEEL DROP-IN



**Function:** Designed to be inserted into a pre-drilled hole and set into place by means of a setting tool.

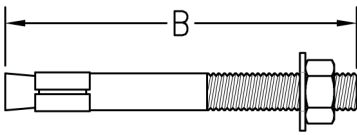
**Material:** Carbon steel

**Finish:** Electro-galvanized

**Ordering:** Specify figure number and rod size.

Rod Size	Hole Size		Anchor Length		Thread Length		Wt. Each	
		(mm)		(mm)		(mm)	lbs.	kg
3/8	1/2	(12.70)	1 9/16	(39.69)	5/8	(15.88)	.07	(.03)
1/2	5/8	(15.88)	2	(50.80)	3/4	(19.05)	.13	(.06)
5/8	3/4	(19.05)	2 1/2	(63.50)	1	(25.40)	.28	(.13)

**Fig. 47W**  
WEDGE



**Function:** Designed to be driven into a pre-drilled hole. The expansion of the case is controlled by the tightening of the nut, this eliminates the need for an exact hole size. Useful in applications where a high resistance to vibratory loads is desired.

**Material:** Carbon steel

**Finish:** Electro-galvanized

**Ordering:** Specify figure number, length (B), and rod size.

Rod Size	Thread Length		Minimum Embedment		Wt. Each	
		(mm)		(mm)	lbs.	kg
3/8 x B	1 1/8	(28.58)	1 5/8	(41.28)	.03	(.01)
1/2 x B	1 1/4	(31.75)	2 1/4	(57.15)	.06	(.03)
5/8 x B	1 1/2	(38.10)	2 3/4	(69.85)	.11	(.05)

THREADED ACCESSORIES  
CPVC STRAPS  
BAND HANGERS  
BEAM CLAMPS  
CLEVIS HANGERS  
PIPE ROLLER SUPPORTS  
SPLIT RING HANGERS  
PIPE CLAMPS  
PIPE CLAMPS  
CENTER LOAD BEAM CLAMPS  
PIPE SHIELDS, INSULATION, & SADDLES  
PIPE GUIDES & SLIDES  
WALL BRACKETS  
PIPE SUPPORTS  
STRUCTURAL ATTACHMENTS  
SEISMIC BRACING