

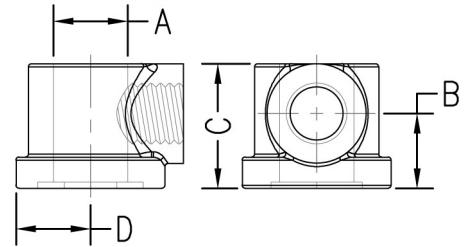
# PIPE ROLLER SUPPORTS



## ROLLER SOCKET

**FIG. 496**

**Function:** Designed for use with Fig. 495.  
**Material:** Cast iron  
**Finish:** Plain or electro-galvanized (Hot dipped galvanized upon request)  
**Ordering:** Specify figure number, socket number, and finish.



Socket Number	Rod Size A	Use with Pipe Roller Size	Axle Size	B		C		D		Wt. Each	
					(mm)		(mm)		(mm)	lbs.	kg
1	3/8	2	3/8	5/8	(15.88)	1	(25.40)	11/16	(17.46)	.12	(.05)
2	1/2	2 1/2 to 3 1/2	1/2	3/4	(19.05)	1 1/4	(31.75)	11/16	(17.46)	.27	(.12)
2A	5/8	4	1/2	7/8	(22.23)	1 1/4	(31.75)	13/16	(20.64)	.25	(.11)
3	5/8	5	5/8	1	(25.40)	1 9/16	(39.69)	1	(25.40)	.53	(.24)
4	3/4	6	3/4	1 1/4	(31.75)	1 13/16	(46.04)	1 1/8	(28.58)	.92	(.42)
5	7/8	8 to 12	7/8	1 1/4	(31.75)	2 1/8	(53.98)	1 1/8	(28.58)	1.44	(.65)
7	1	14	1 1/8	1 3/4	(44.45)	2 3/8	(60.33)	1 3/8	(34.93)	2.03	(.92)
8	1	16 to 18	1 1/4	1 13/16	(46.04)	3	(76.20)	1 5/8	(41.28)	2.60	(1.18)
8A	1 1/4	20	1 1/4	1 13/16	(46.04)	3	(76.20)	1 5/8	(41.28)	2.56	(1.16)
9B	1 1/2	24	1 1/2	2 3/16	(55.56)	3 3/8	(85.73)	2 1/16	(52.39)	4.96	(2.25)
10	1 1/2	30	1 3/4	2 9/16	(65.09)	4	(101.60)	2 5/16	(58.74)	6.94	(3.15)

- THREADED ACCESSORIES
- CPVC STRAPS
- BAND HANGERS
- BEAM CLAMPS
- CLEVIS HANGERS
- PIPE ROLLER SUPPORTS
- SPLIT RING HANGERS
- PIPE CLAMPS
- CENTER LOAD BEAM CLAMPS
- PIPE SHIELDS, INSULATION, & SADDLES
- PIPE GUIDES & SLIDES
- WALL BRACKETS
- PIPE SUPPORTS
- STRUCTURAL ATTACHMENTS
- SEISMIC BRACING